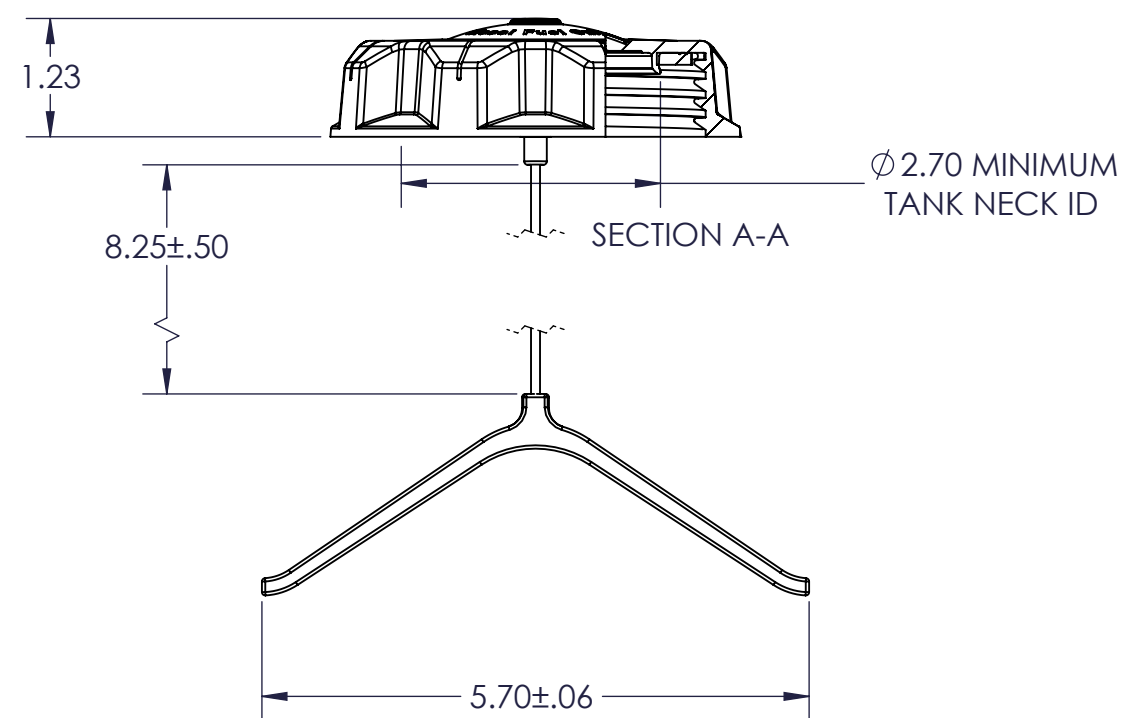
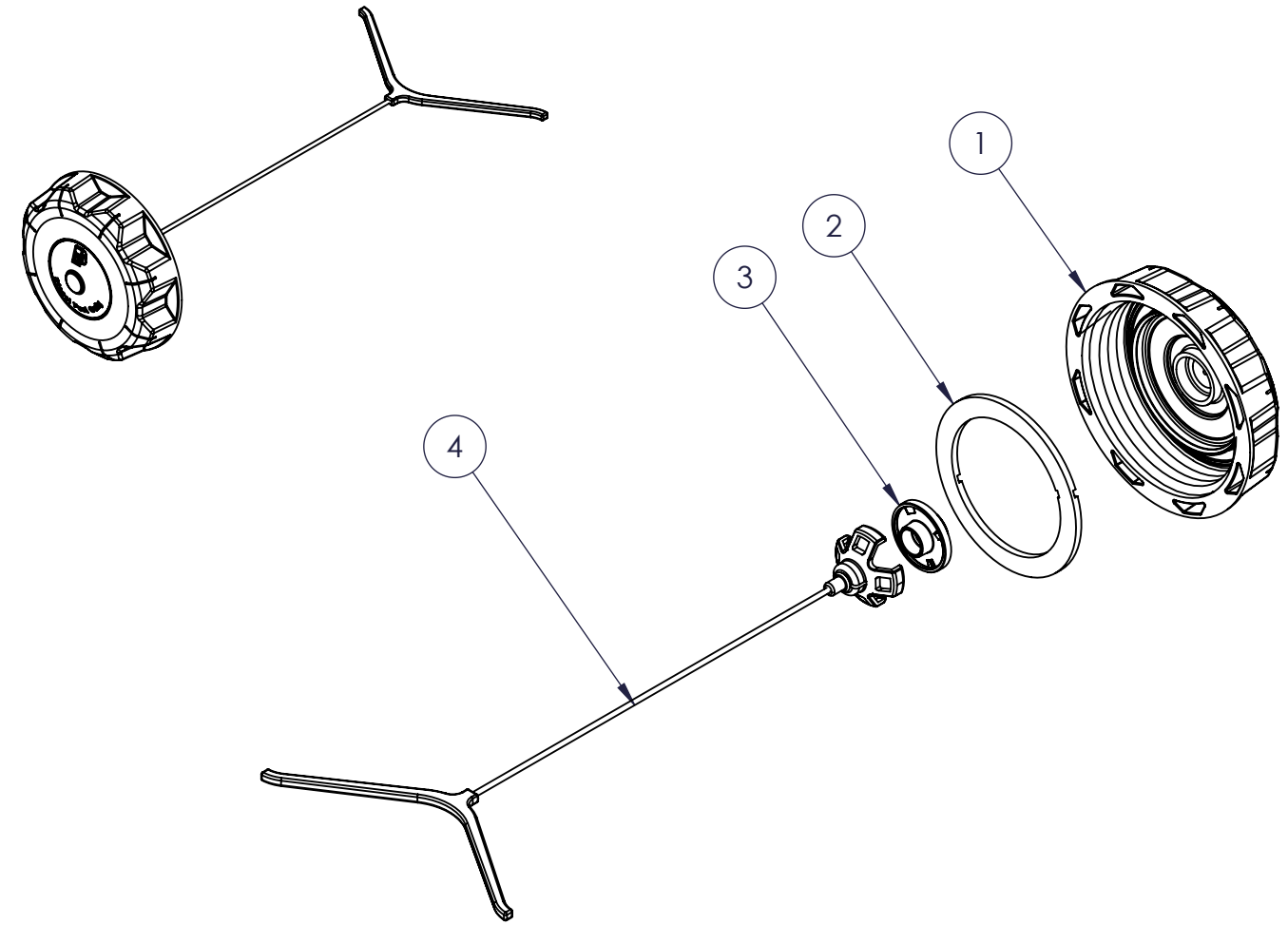
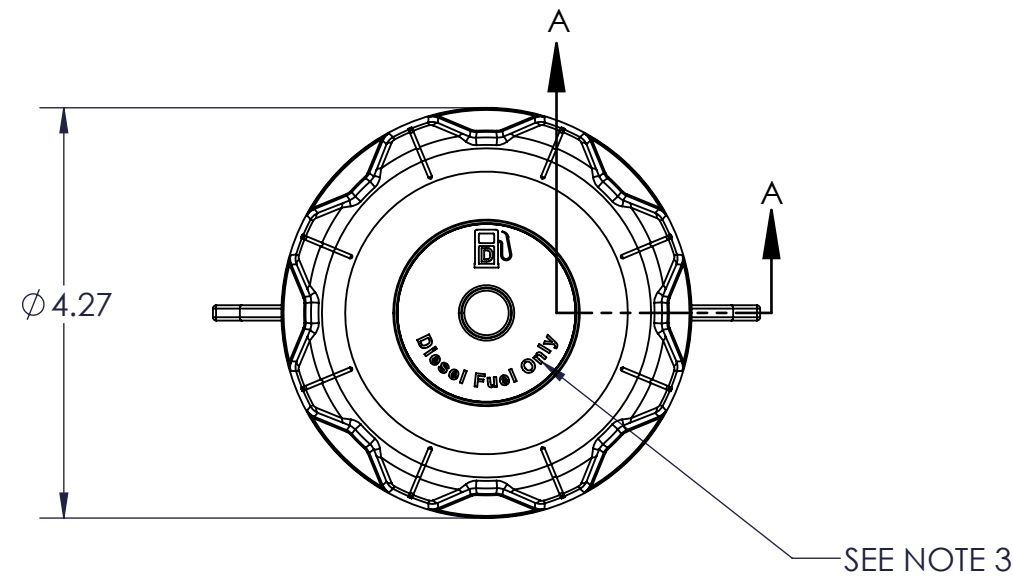


| REVISIONS |     |                         |         |     |     |
|-----------|-----|-------------------------|---------|-----|-----|
| REV       | ECR | DESCRIPTION             | DATE    | BY  | APR |
| A         | NPN | RELEASED FOR PRODUCTION | 5-15-13 | ANA | PSB |



- NOTES:
1. CAP THREAD IS MODIFIED BUTTRESS THREAD 3.50" - 5 TPI
  2. SEE DWG S-10283 FOR MATING THREAD SPECIFICATIONS.
  3. GRAPHIC IS PRINTED BLACK DFO. REFERENCE DWG S-10032 FOR DETAILS.
  4. TESTING AND VERIFICATION THAT THIS PRODUCT IS APPROPRIATE FOR THE APPLICATION FOR WHICH IT IS INTENDED IS THE SOLE RESPONSIBILITY OF THE PURCHASING PARTY.

| ITEM | FPN     | DWG #   | DESCRIPTION | QTY. |
|------|---------|---------|-------------|------|
| 4    | 468776  | S-10369 | TETHER      | 1    |
| 3    | 912497B | S-10011 | RETAINER    | 1    |
| 2    | 468767B | B9370   | GASKET      | 1    |
| 1    | 961168A | S-10037 | CAP         | 1    |

|   |     |  |  |
|---|-----|--|--|
| <small>PROPRIETARY AND CONFIDENTIAL</small><br><small>THE INFORMATION CONTAINED IN THIS DRAWING IS THE SOLE PROPERTY OF FLAMBEAU, INC. ANY REPRODUCTION IN PART OR AS A WHOLE WITHOUT THE WRITTEN PERMISSION OF FLAMBEAU, INC. IS PROHIBITED.</small>   | SHT | <b>F</b> <b>FLAMBEAU, INC.</b>                         |  |
|   | 1   | SCALE: 1:2   | BFI NO: NA<br>DRAWN BY: ANA DATE: 5-2-13 |
| <small>DIMENSIONS ARE IN INCHES.</small><br><small>THE FOLLOWING TOLERANCES APPLY UNLESS OTHERWISE SPECIFIED</small><br><small>ANGULAR: ±3°</small><br><small>TWO PLACE x.xx ±.01"</small><br><small>THREE PLACE x.xxx ±.005"</small><br><small>DIMENSIONS IN PARENTHESIS ( ) ARE FOR REFERENCE ONLY.</small> | OF  | DESCRIPTION: 3.50" THREAD VENT DFO PRINTED CAP - GREEN |  |
|   | 1   | CUSTOMER: FLAMBEAU FLUID SYSTEMS                       | DWG NO: 080196                           |